

Summary

Certificate Of Analysis (COA)

Brand: Tasty Hemp Oil
Product: Softgels
Size: 1 softgel, 15mg CBD

Weight: Results by capsule
Lot #: 112023

The lab test results on the next page display the cannabinoid profile in the following format: milligrams per gram (mg/gram).

A quick calculation is required to understand the total cannabinoids in the full product: **Results (mg/gram) x Product Weight (grams)**.

The product weight is listed above and lab results are on the next page.

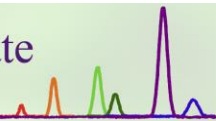
For your convenience, the calculation has been done for you below.

Total Cannabinoids*
15.45mg

* Total Cannabinoids is the calculated total amount of cannabinoids in the finished product. This value is found by multiplying the Total Cannabinoids (milligram per gram) from the lab test results (next page) by the total weight (grams) of the finished product.

This summary is an easy-to-read representation of the lab test results. All information is provided by the manufacturer. For actual lab test results from Gobi, please go to the next page.

Actual lab test results on next page



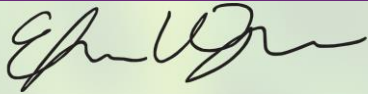
Certificate ID: **68430**
 Client Sample ID: **101719E**
 Lot Number: **112023**

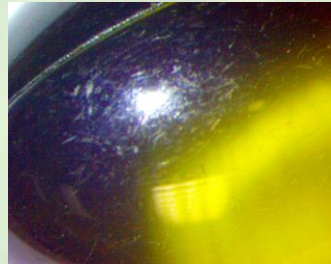
Received: **10/18/19**

Scan QR Code for authenticity



Matrix: **Capsules/Tablets - Capsule-Oil Based**

Authorization: Elizabeth R. Wagoner, Lab Director	Signature: 	Date: 11/1/2019
--	--	--------------------








The data contained within this report was collected in accordance with the requirements of ISO/IEC17025:2017. I attest that the information contained within the report has been reviewed for accuracy and checked against the quality control requirements for each method. These results relate only to the test article listed in this report. Reports may not be reproduced except in their entirety.

CN: Cannabinoid Profile & Potency [WI-10-17 & WI-10-17-01] Analyst: *JSG* Test Date: *10/28/2019*

The client sample was analyzed for plant-based cannabinoids by Liquid Chromatography (LC). The collected data was compared to data collected for certified reference standards at known concentrations.

68430-CN

ID	Weight %	Concentration (mg/CAP)	
D9-THC	0.09	0.52	
THCV	ND	ND	
CBD	1.80	10.89	
CBDV	0.01	0.06	
CBG	0.04	0.21	
CBC	0.09	0.55	
CBN	ND	ND	
THCA	ND	ND	
CBDA	0.52	3.13	
CBGA	0.01	0.08	
D8-THC	ND	ND	
exo-THC	ND	ND	
Total	2.56	15.45	0% Cannabinoids (wt%) 1.8%
Max THC	0.09	0.52	
Max CBD	2.26	13.64	

Ratio of Total CBD to THC 26.3:1

Limit of Quantitation (LOQ) = 0.010 wt%

Max THC (and Max CBD) are calculated values for total cannabinoids after heating, assuming complete decarboxylation of the acid to the neutral form. It is calculated based on the weight loss of the acid group during decarboxylation: Max THC = (0.877 x THCA) + THC. This calculation does not include other cannabinoid isomers (eg. D8-THC and exo-THC). ND = None detected above the limits of detection (LOD), which is half of LOQ.