



Cannabinoid Potency Analysis by High Performance Liquid Chromatography

Test Accreditation #: 4092-004

Sample ID #: 120023-001

Sample Details

Product: Hemp Oil Care Spray 1200mg Spearmint
Sample: 102219I
LOT: FG002987
Sampled Product: Tincture
Method: FE04U
Instrument ID: HPLC1100-OR1
Molds/Pests: N/A

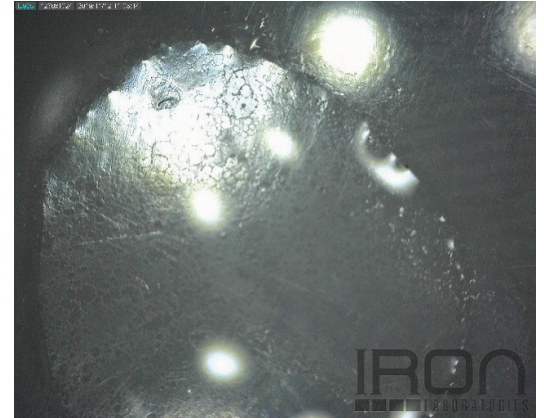
Test Conditions

Scale: XS205-OR1
Temp.: 23.4 °C
Baro Pressure: 1005 hPa

Test Date: 11/12/2019

Simple Cannabinoid Profile Overview

Total Product Size: 55.6g
****Total Cannabinoids:** 1,451.72mg



Test Compounds	THC	THCA	CBD	CBDA	CBN	CBG	CBC	THCV*	CBDV	Total Cannabinoids*	Total THC	Total CBD	Calc Max Total Cannabinoids*
Amount (%)	N/D†	N/D	2.61	N/D	N/D	N/D	N/D	N/D	N/D	2.61	0.00†	2.61	2.61
Amount (mg/g)	N/D†	N/D	26.11	N/D	N/D	N/D	N/D	N/D	N/D	26.11	0.00†	26.11	26.11
Amount per Serving (mg)	N/D†	N/D	N/D	N/D	N/D	N/D	N/D	N/D	N/D	0.00	Serving Size~ (g):		0.00
LOQ (mg/g)	0.9	0.9	0.9	0.9	0.9	0.9	0.9	0.9	0.9		%Decarb.	THC	CBD
±%RPD	+/-5%	+/-5%	+/-5%	+/-5%	+/-5%	+/-5%	+/-5%	+/-5%	+/-5%			N/A	100%

LOQ = Limit of Quantitation; %RPD = Relative Percent Deviation; %RSD = Relative Standard Deviation; N/D = Not Detected

*Designates values that are not currently included in the accredited scope of Iron Laboratories.

*** Designates tests that use the method FE-45.

Total THC and CBD is the calculated sum of THC or CBD and the amount of THC or CBD derived from THCA or CBDA, respectively. These values are calculated by applying a molar correction factor of 0.877 to the THCA or the CBDA value. Calc Max Total Cannabinoids is the sum of Total THC, Total CBD, CBN, CBG, CBC, THCV, and CBDV.

%Decarb. THC and CBD refers to the percentage of THC or CBD relative to THCA or CBDA, respectively.

This sample has not been tested according to OAR 333-007. These results should therefore be used for research and development or quality control purposes only.

† This passes our quality control guidelines for non-psychoactive industrial hemp oil.

All lab testing is performed by a third party facility at one of the labs listed below. The results are taken from a sample of this product. This Certificate of Analysis (COA) is for internal use only and shall not be replicated or shared without written approval from CBD Guru.

** Total Cannabinoids in the simple cannabinoid profile overview is the calculated total amount of cannabinoids in the finished product. This value is found by multiplying the Total Cannabinoids (milligram per gram) in this test result by the total weight (grams) of the product.



[Handwritten Signature]

Management Signature